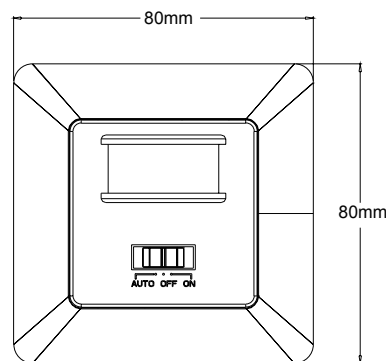
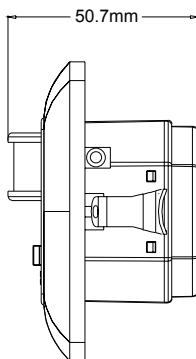


LX2200V3 Infrared Motion Sensor Instruction



Summary

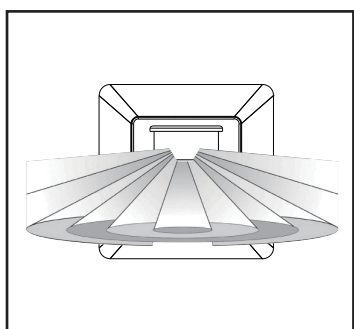
LX2200V3 is a new generation infrared sensor developed by our long-term market forecast and investigation. It has strong stability, it gathers multi-function, practical, good appearance, wide working voltage, convenient installation, detection indication, multi-working mode, etc. It adopts SMT technique. It is accorded with European standard, it is suitable for automatic control for home, hotel and enterprise.

Specifications

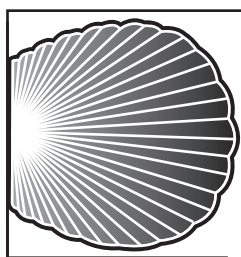
Power source: 220-240V/AC
Power frequency: 50Hz
Rated load: 500W Max. tungsten ($\cos\phi=1$)
Detection angle: $>140^\circ$
Light-control: 3LUX~1000LUX (adjustable)
Time setting: $10\pm3\text{sec}$ ~ $10\pm2\text{min}$ (adjustable)

Detection range: $10\pm2\text{m}$ Max (22°C)
Installation height: 0.4m~1.8m
Power consumption: 0.45W (static 0.1W)
Detection motion speed: 0.6~1.5m/s
Sound control sensitivity: 30db~90db (adjustable)
Working humidity: $<93\%\text{RH}$
Working temperature: $-10\sim+40^\circ\text{C}$

Sensor Information



$10\pm2\text{m}$
Correct moving orientation



$>140^\circ$
Detection angle

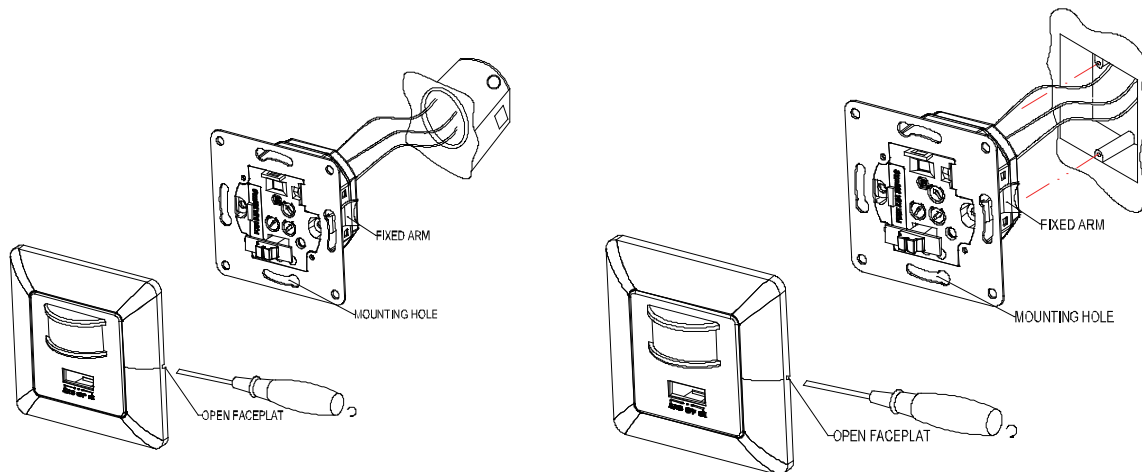
Function

- Multi-function: It has ON, OFF, light-control, high sensitive sound control, long distance, wide range infrared detection functions;
- Practicality: by the light-control it can control the sound-control and the ambient-light when the sensor works. It can work in various ambient-light day and night, it also can work only in low ambient-light; Time setting can be adjusted by yourselves in stipulated range; infrared induction and sound control sensitivity can be controlled by yourselves;
- Good appearance: The surface design is facility, comely but not losing generosity, the style is elegance, it will not have accidented feeling after installation;

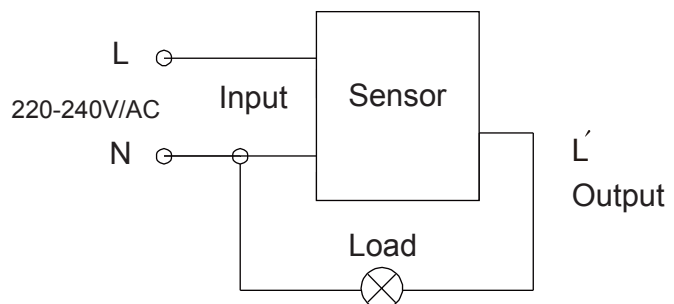
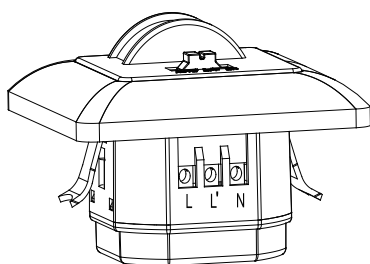
- Wide working voltage: 220-240V/AC 50Hz. You will not be worried when you go all over Europe carrying LX2200V3;
- Convenient installation: Two-installation modes for your selection. It can be installed in circular or quadrate junction box; you could fix the sensor with two screws on the junction box in circular one, also fix it with special installation shelf on sensor. In a word, whether the junction box installation orientation is true, LX2200V3 makes the installation flatly;
- Multi-working mode: You can select ON, OFF, infrared detection, infrared detection +sound control mode, if you select infrared detection + sound control mode, the lamp will be on automatically when you knock at the door or say "I am coming back" at night you come back home, it will make your home warmer and more romantic.

Installation:

- Shut off the power.
- Loosen the connection column on the bottom of sensor, plug the wire into connection hole, tighten the screws.
- Unload the surface of sensor, connect the sensor into connection box.
- If you want to install it in quadrate connection box, penetrate the setscrew into installation hole, block on radiator to aim at the installation hole on connection box, then tighten the screw; if you want to install it in circular one, you can use the same way as the quadrate, also adjust the sensor's position, tighten the setscrew on surface, then the fixing arm will open automatically, fasten the connection box.
- Switch on the power then test it.

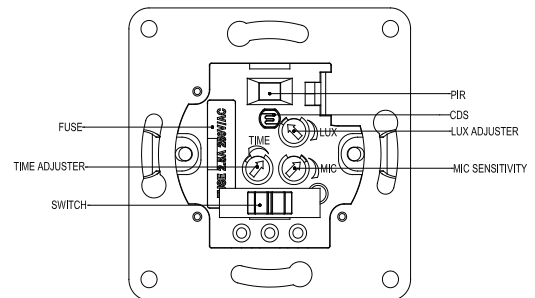
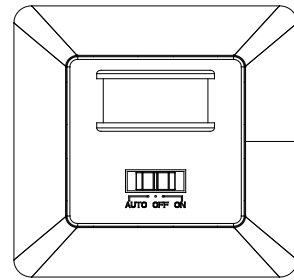


Connection-wire diagram



Test

- Set the function switch to “ON”, “MIC” anti-clockwise to minimum; “LUX” clockwise to maximum; “TIME” anti-clockwise to minimum; Switch on the power, the lamp should be on;
- Set the function switch to “OFF” after 30 sec, the lamp should be off, all functions should be in “stop” state;
- Set the function switch to “AUTO” after 30sec, the inductor lamp will be on after 20sec when there is inductor signal whether the lamp is on or not. Under no inductor signal condition, the lamp should be off within 10~13sec. Set “LUX” to minimum, after it is off when there is no inductor signal condition, the lamp should be off in the daytime, but if you use a opaque object to cover sensor, the lamp should be on, then off within 10~13sec;
- Set the function switch to “AUTO”, “LUX” to maximum, “MIC” to maximum; then the sensor is in the infrared detection + sound control mode, cover the detector, if the lamp is on, under no inductor signal condition, the lamp should be off after 10~13sec, after 5sec if you clap your hands, the lamp should be on, then off after 5~10sec (no inductor signal).



Note

- Let electrician or experienced human install it;
- The unrest objects can't be regarded as the installation basis-face;
- There should be no hinder or unrest objects effecting detection in front of the detection window;
- Avoid installing it near temperature alteration zones, for example, air condition, central heating etc;
- Don't open the case for your safety if you find the hitch after installation;
- If there is any difference between instruction and products, please give priority to product, sorry not to inform you again.

Some problem and solved way

- 1、**The load do not work:**
 - a: Please check if the connection-wiring of power and load is correct;
 - b: Please check if the load is good ;
 - c: Please check if the working light set correspond to light-control.
- 2、**The sensitivity is poor:**
 - a: Please check if there has hinder in front of the detection window to effect to receive the signal;
 - b: Please check if the ambient temperature is too high;
 - c: Please check if the induction signal source is in the detection fields;
 - d: Please check if the installation height corresponds to the height showed in the instruction;
 - e: Please check if the moving orientation is correct.
- 3、**The sensor can not shut off the load automatically:**
 - a: Please check if there is continual signal in the detection field;
 - b: Please check if the time setting is the longest;
 - c: Please check if the power correspond to the instruction;
 - d: Please check if the temperature near the sensor change obviously, such as air condition or central heating etc.



Warning!

- Please confirm with professional installation.
- Please cut off power supply before installation and removal operations.
- Make sure that you have cut off the power for safety purposes.
- Improper operation caused losses, the manufacturer does not undertake any responsibility.

We are committed to promoting the product quality and reliability, however, all the electronic components have certain probabilities to become ineffective, which will cause some troubles. When designing, we have paid attention to redundant designs and adopted safety quota to avoid any troubles.

This instruction, without our permission, should not be copied for any other purposes.