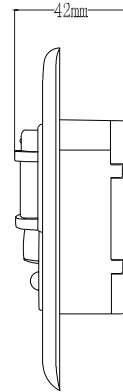
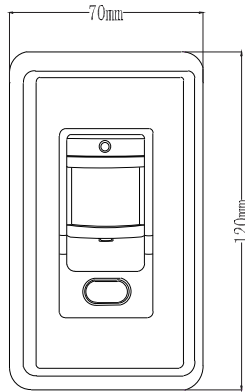


LX-PR-21B Infrared Motion Sensor Instruction



Summary

The product is a new energy-saving switch. it adopts integrated circuit, good sensitivity detector and SMT. It incorporates automatic, convenient, safe, energy-saving and practical functions.. The wide detection range is made up of the up and down, left and right service field. It works by receiving human motion infrared rays. It can start the controlled load at once when one enters detection field. It can identify day and night automatically. Its using range is wide. Its installation is very convenient. It has the functions of the power indication and the detection indication.

Specifications

Power source: 100-130V/AC ☐
220-240V/AC ☐
100-240V/AC ☐

Power frequency: 50/60Hz

Light-control: <20LUX

Rated Load: 800W Max.tungsten (100-130V/AC)
100W Max. fluorescent (100-130V/AC)
1200W Max.tungsten (220-240V/AC)
200W Max. fluorescent (220-240V/AC)

Detection range: 9m max (22°C)

Time setting: Min:8sec±3sec

Max:7min±2min(adjustable)

Detection angle: 140° ☐
180° ☐

Working temperature: -10~+40°C

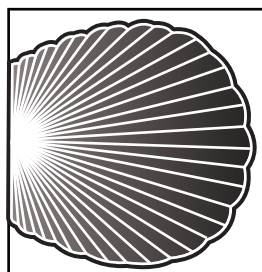
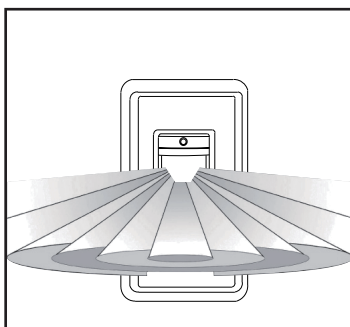
Working humidity: <93%RH

Installation height: 1m~1.6m

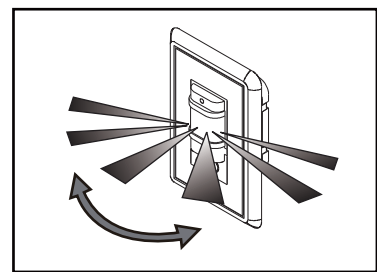
Power consumption: 0.45W(static 0.1W)

Detection motion speed: 0.6~1.5m/s

Sensor information



9m
Correct moving orientation



140° / 180°
Detection angle

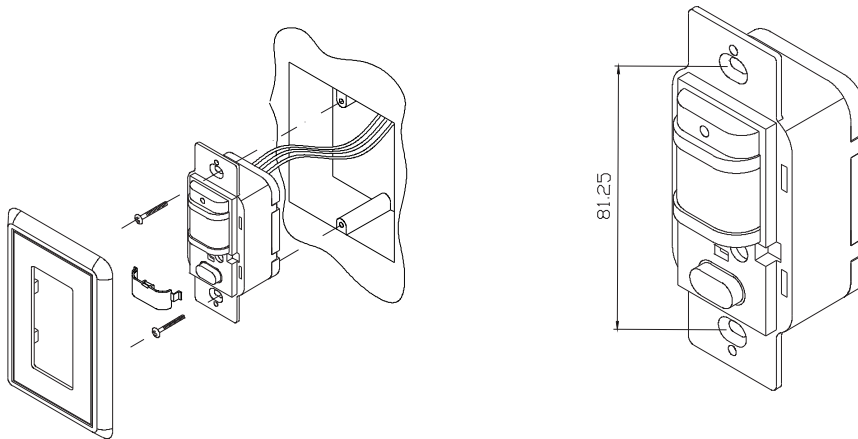
Function

➤ Detection field: The detection field is made up of up and down, left and right service field. But the moving orientation in the detection field has great relationship with the sensitivity.

- Can identify day and night: It has been set before produce. But it can only work in the ambient light less than 20LUX.
- Power and detection indication: The indicator lamp can flash one time every 4sec after switching on the power. It can flash 2 times every 1sec after it receives the signals. So it shows if the detection and power is normal.
- Time setting is added continually: When it receives the first induction signals and then receives the second induction, it will re counting time on every time inductions(set time).
- Time setting adjustment: It can be set according to the consumer's desire. The minimum time is $8\text{sec} \pm 3\text{sec}$. The maximum is $7\text{min} \pm 2\text{min}$.
- The switch: the "AUTO" condition when you push it in. It is "OFF" condition when you push it out.

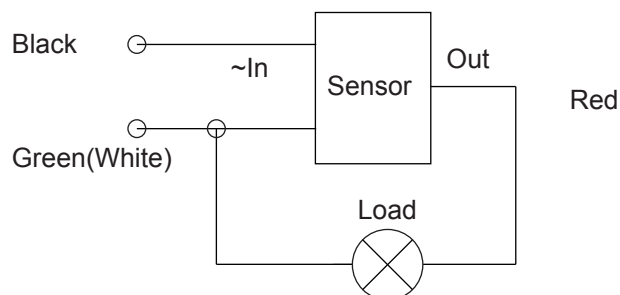
Installation: (see the following diagram)

- Switch off the power
- The power and the load wire are connected with the sensor according to connection-wire diagram.
- Take the board-face off. The sensor is fixed on the selected position.
- You can switch on the power and test it after covering the board-face.



Connection-wire diagram

(see see the right Fig)

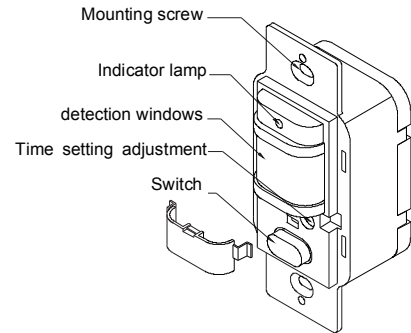


Test

- Turn the time knob anti-clockwise on the minimum after taking the board-face off.
- After switching on the power, the controlled load won't work and the indicator lamp flash one time every 4sec. The load should work within 10sec and the indication lamp can flash 2 times every 1sec if you cover the detection window with the opaque objects (towel etc.). (The light can't project the detection window). Under the no induction signals conditions, the load should stop working within 5~30sec. At the same time, the indicator lamp should flash still one time every 4sec.
- After the first is out, take 5~10sec to cover the detection window. The load should work and the indicator lamp flash 2 times every 1sec. The load will stop working within 5~15sec.
- The load should work within 5~10sec if you test it in the ambient light less than 20LUX after switching on the power. After the load stop working, the sensor load should not work.(the sensor work continually if it received the continual inductor signals when the load is working). If you sense it again, the load should work.Under the no inductor signals conditions, it is normal for the load to stop working within 5~15sec.

Notes

- Electrician or experienced human can install it.
- The unrest objects can't be regarded the installation basis-face.
- There aren't hinder or unrest objects effecting detection in front of the detection window.
- Avoid installing it near temperature alteration zones, for example: air condition, central heating etc.
- Please don't open the case for your safety if you find the hitch after installation.
- If there are some difference between instruction and the function the product has, please give priority to product and sorry not to inform you additionally.



Some problem and solved way

1. The load don't work:

- a. check the power and the load.
- b. If the load is good.
- c. If the indicator lamp speed quicken after induction. please check if the switch is on the "auto" position if the speed quicken.
- d. Please check if the working light correspond to the ambient- light.

2. The sensitivity is poor:

- a. Please check if in front of the detection window there is hinder that effect to receive the signals.
- b. Please check the ambient temperature.
- c. Please check if the signal source is in the detection field.
- d. Please check the installation height.
- e. If the moving orientation is correct.

3. The sensor can't shut off the load automatically:

- a. If there is continual sensor signal in the detection field.
- b. If the time-delay be set to the longest.
- c. If the power correspond to the instruction.
- d. If the temperature change near the sensor. (air condition, central heating etc.)



Warning!

- Please confirm with preffessional installation.
- Please cut off power supply before installation and removal operations.
- Make sure that you have cut off the power for safety purposes.
- Improper operation caused losses, the manufacturer does not undertake any responsibility.

We are committed to promoting the product quality and reliability, however, all the electronic components have certain probabilities to become ineffective, which will cause some troubles. When designing, we have paid attention to redundant designs and adopted safety quota to avoid any troubles.

This instruction, without our permission, should not be copied for any other purposes.