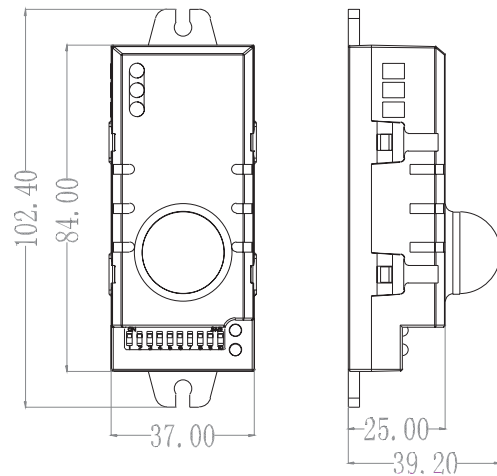




LX-MV-360S10 Microwave Sensor Instruction

Appearance and size



Specifications

Power source: 90-240V/AC

Power frequency: 50/60Hz

Transmission power: <0.2mW

Rated load:

1200W/5A, Max, tungsten ($\cos\phi=1$) (220-240V/AC)

300W/2.5A, Max, fluorescent ($\cos\phi=0.5$) (220-240V/AC)

600W/5A, Max, tungsten ($\cos\phi=1$) (100-130V/AC)

150W/2.5A, Max, fluorescent ($\cos\phi=0.5$) (100-130V/AC)

Installation sit: indoors, ceiling mounting

HF system: 5.8GHz CW electric wave, ISM band

Working temperature: $-15^{\circ}\text{C}\sim+70^{\circ}\text{C}$

Detection angle: 360°

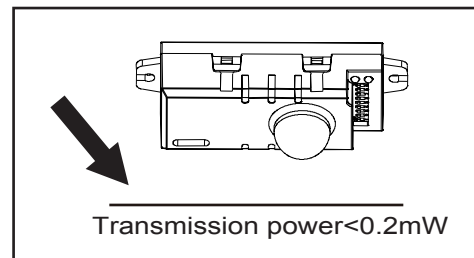
Detection range: 2m-5m-8m-10m (radii.) (adjustable)

Time setting: 6sec-1min-3min-5min-10min-15min (adjustable)

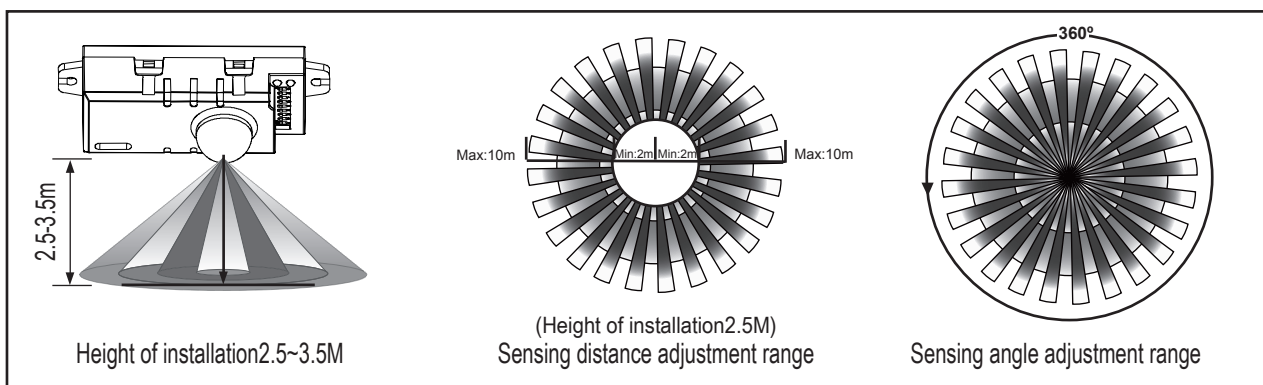
Light-control: <10LUX-100LUX-300LUX-2000LUX (adjustable)

Power consumption: approx. 0.5W

NOTE: the high-frequency output of this sensor is <0.2mW- that is just one 5000th of the transmission power of a mobile phone or the output of a microwave oven.



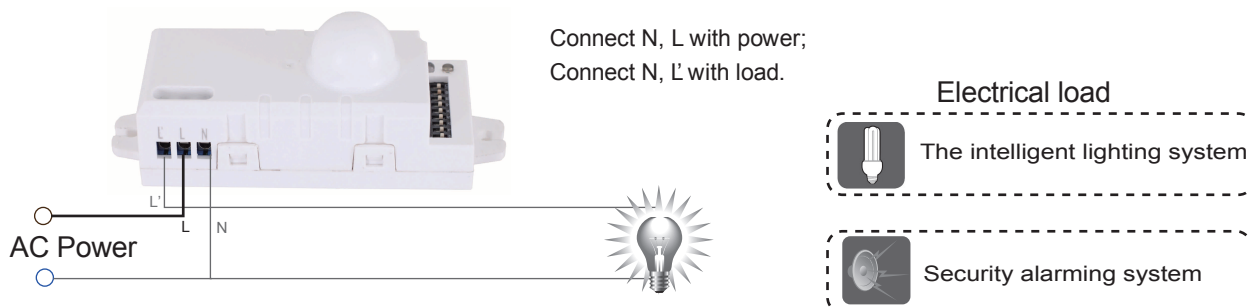
Sensor information



Utilizing field and introduction

LX-MV-360S10 is a moving object sensor that can detect range of 360° and its working frequency is 5.8G. The advantage of this product is stable working state (stable working temperature: $-15^{\circ}\text{C}\sim+70^{\circ}\text{C}$), LX-MV-360S10 adopts a microwave sensor (high-frequency output <0.2mW), so that it is safe and performs better than infrared sensor.

It can be installed inside of product that is made of glass and plastic because that these materials make little effect to microwave. Connect the product as shows below; you can change a common light to an automatic light.



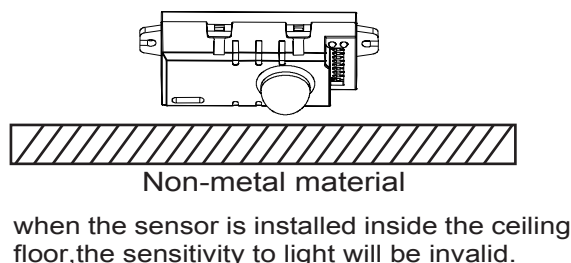
Utilized in ceiling light



This product can be utilized in more fields than the above examples. You can also install a LX-MV-360S10 in the ceiling directly to control an aisle. There is no problem.

Warning!

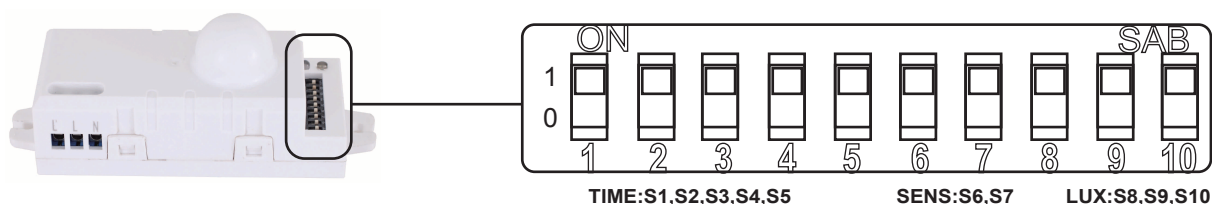
The product can not work normally if there is metal material behind the Installed place.



This product will be faithfully waiting for you. It will turn on the light automatically when you pass by, and turn off the light automatically when you leave off. You can set the closing delay time to meet your needs. For example, you may adjust the TIME sliding controller to select the delay time 6sec~15min when you think you will come back in 15mins. The TIME sliding controller is as follow (Keep away from the detecting zone after adjusting the testing time or that the detecting time will be inaccurate when any moving object is detected again by the product).

Parameter setting

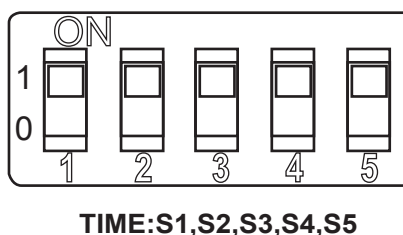
Shown as chart below: By setting the S1, S2, S3, S4, S5 to set the delay time of products, by setting S6, S7 to set the detection range of products, by setting the S8, S9, S10 to set the light-control of products.



If you want LX-MV-360S10 to detect small zone, you can just adjust the sense sliding controller SENS to the range that you need (You may need to adjust some times until you think it is suitable). If you want that the light can be turned on when the circumstance luminance is under some value, you can just adjust the sliding controller LUX (The working luminance sliding controller) to select the luminance value (You may need to adjust some times until you think it is suitable).

Time setting

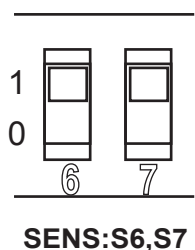
The light can be set to stay ON for any period of time between approx. 6sec and a maximum of 15min. Any movement detected before this time elapse will re-start the timer. It is recommended to select the shortest time for adjusting the detection zone and for performing the walk test. Pull switch to the ON position as "1", pull switch to the OFF position as "0", switch location and detection range of the corresponding table is as follows:



S1	S2	S3	S4	S5	Time setting
0	0	0	0	0	15min
1	0	0	0	0	10min
0	1	0	0	0	5min
0	0	1	0	0	3min
0	0	0	1	0	1min
0	0	0	0	1	6sec

Detection range setting (sensitivity)

Detection range is the term used to describe the radii of the more or less circular detection zone produced on the ground after mounting the sensor light at a height of 2.5m, pull switch to the ON position as "1", pull switch to the OFF position as "0", switch location and detection range of the corresponding table is as follows:



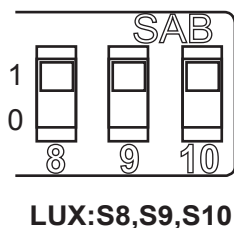
S6	S7	Detection range
1	1	10m
1	0	8m
0	1	5m
0	0	2m

ATTENTION: When use this product, please adjust the sensitivity to an appropriate position you need, please do not adjust the sensitivity to maximum, to avoid the product does not work normally caused by wrong motion. Because the sensitivity is too high easily detect the wrong motion by wind blowing leaves & curtains, small animals, and the wrong motion by interference of power grid & electrical equipment. All those lead the product does not work normally !

When the product does not work normally, please try to lower the sensitivity appropriately, and then test it.

Light-control setting

The chosen light response threshold can be infinitely from approx. 10-2000lux, pull switch to the ON position as "1", pull switch to the OFF position as "0", switch location and detection range of the corresponding table is as follows:



S8	S9	S10	Light-control
0	0	1	2000LUX
0	1	0	300LUX
1	0	0	100LUX
0	0	0	<10LUX



Warning! The following situation will lead to misoperation

1. Being installed in the rocking object will lead to misoperation.
2. The shaking curtain which is blown by wind will lead to misoperation, please select the suitable installed place.
3. Being installed in the place where the traffic is busy will lead to misoperation.
4. It will lead to misoperation when there are sparks produced by some equipment nearby.

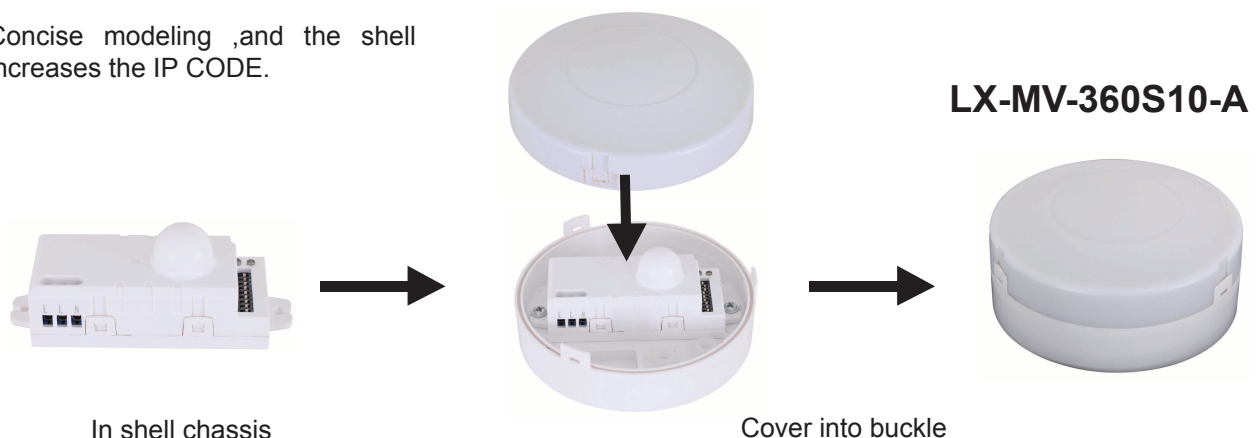
Troubleshooting

Malfunction	Cause	Remedy
The load will not work	• wrong light-control setting selected	• Adjust setting
	• load faulty	• Change load
	• mains switch OFF	• Switch ON
The load work always	• continuous movement in the detection zone	• Check zone setting
The load work without any identifiable movement	• the sensor not mounted for detecting movement reliably	• Securely mount enclosure
	• movement occurred, but not identified by the sensor(movement behind wall, movement of a small object in immediate lamp vicinity etc.)	• Check zone setting
The load will not work despite movement	• rapid movements are being suppressed to minimize malfunctioning or the detection zone you have set is too small	• Check zone setting

If you want use LX-MV-360S10 as a single, you can also order the shell which is especially manufactured for the product to be installed in, or you can select the product LX-MV-360S10-A directly. The protection grade of LX-MV-360S10-A is IP55, so LX-MV-360S10-A is better than LX-MV-36010 with the higher water proof quality.

Application places (According to customer's need selected.)

Concise modeling ,and the shell increases the IP CODE.



NINGBO LEXING INDUCTOR ELECTRONIC CO.,LTD

Add:No.35 Zhuquan Road,Science&Technology Area.
Ninghai,Ningbo,Zhejiang,China
Tel:+86-574-65335088
Fax:+86-574-65335000 65335333

E-mail:lexing@lexing.com.cn
E-mail:lexing@globalmarket.com
www.lexing.com.cn
www.lexing.com