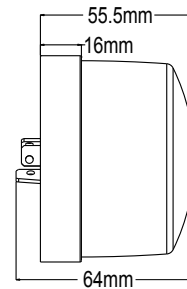
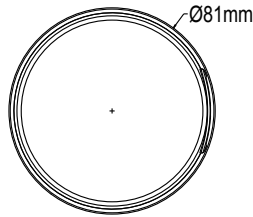
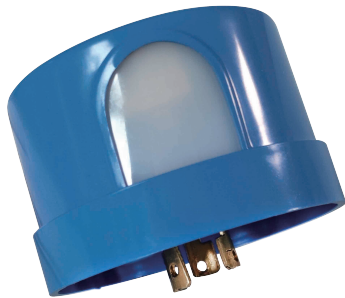




LX-P07 Light-Control Sensor Instruction



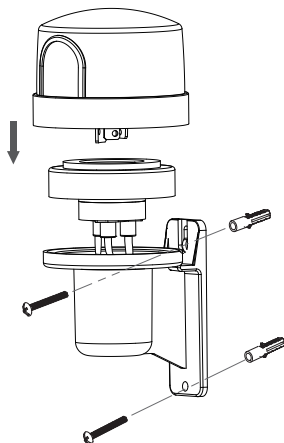
Summary

The light-control switch can turn on and turn off light automatically according to ambient light; it is not affected by ambient temperature and humidity; It is not only convenient but also practical; it can control the load that works at night.

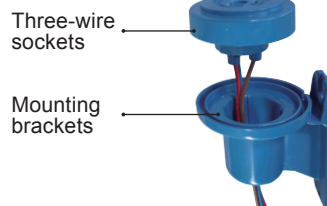
Specifications

Power source: 220-240VAC ☐
100-130VAC ☐
Power frequency: 50/60Hz
Power current: 10A
Light-control: 10~45LUX

Installation figure

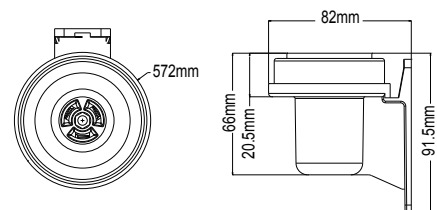
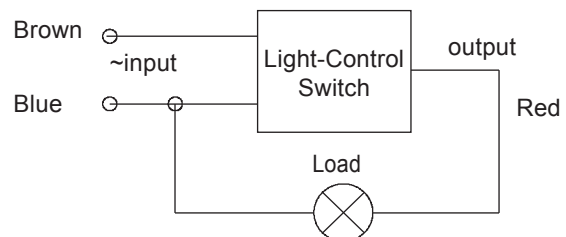


NOTE: Three-wire sockets and mounting brackets can be purchased according to customer needs!



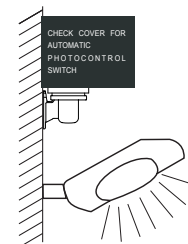
Connection-wire diagram

Connect blue and brown with power
Connect blue and red with load



Test

1. Use opaque to cover the sense-light window when testing in the daytime.
2. When cover this opaque, the load will be on.
3. When take off this opaque, the load will be off.
4. Take off this opaque after testing.



Notice

1. In front of the light-control switch there should be no block affecting it to receive natural light;
2. In front of the light-control switch there should be no swaying object;
3. Avoid installing the unit below light.